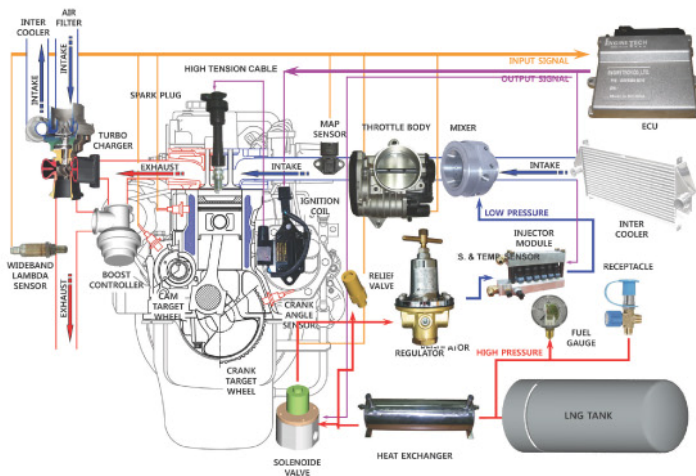


LNG Retrofit Kit

Dedicate System

System Diagram



Main System Component

- Regulator & Solenoid Valve
- Injector
- Fuel Mixer
- ETC(Electronic Control Throttle Body)
- Receptacle
- High Pressure Fuel Filter
- High Pressure Fuel Gauge
- Ignition Coil
- High Tension Coil
- Spark Plug
- ECU & Wiring Harness
- MAP Sensor
- Crank Angle Sensor & Target Wheel
- Water Temperature Sensor
- Wide Bend Lambda Sensor
- Boost Controller

System Feature

- Diesel vehicle Retrofit to LNG
- Meet the Exhaust Gas Emission to EURO2&3
- Equivalent Performance Compare to Base Diesel Engine
- High Performance and Reliability
- Customized LNG Engine Development
- High Efficiency and Economized LNG System
- High Safety and Quality Assurance
- Boost pressure control (electronically)

Retrofit Engine Performance



System Specification

- Regulator/Injector : 8bar spec
- electronically controlled boost pressure
- Up to 440HP engine applied
- Lean-burn A/F Ratio Applied
- compression Ratio : 11.5:1
- Lean Mixture feed Back control



Main System component

item	component specification	item	component specification
<p>ECU</p> 	<p>Working Voltage : +17~30voltage Working Temperture : -40~120°... Boost Control and Leanburn Control Certificate E4-10R</p>	<p>Pressure Regulator</p> 	<p>Working Pressure : Up to 18 Bar Outlet pressure : 1~8.2 bar Setting pressure : 6 bar (°±0.1) Certificate ECE R110</p>
<p>Injector Module</p> 	<p>Working Pressure : 8Bar Working temperature : -40°C~+125°C Resistor : 8.5 Ω Certificate ECE R110</p>	<p>Heat Exchanger</p> 	<p>Working Pressure : Up to 17 Bar Port Size : 1/2 Tube</p>
<p>Lambda Sensor</p> 	<p>Wideband Lambda Senor Heating type Detection λrange : 0.65~2.42</p>	<p>Solenoid Valve</p> 	<p>Working Pressure : Up to 15 Bar Working Temperture : -10~50°... Port Size : PT 1/2"</p>
<p>SENSOR-CRANK ANGLE</p> 	<p>Pick-up type Coil Resistance : 870 Ω</p>		<p>Working Pressure : Up to 55 Bar Max. temperature : 79°C Port Size : NPT 1/2"</p>
<p>Ignition Coil</p> 	<p>Working Voltage : +8~16volt Primary resistance : 0.7 Ω Primary Current : 6A</p>		<p>Include TPS (Throttle Position Sensor) Include ISC (Idle Speed Controller)</p>

EngineTech EngineTech Co., Ltd

669-6, Yangno-ri, Bibong-myeon, Hwasung-si,
Gyeonggi-do, 445-842, Korea
Tel: +82.31.369.0810 Fax : +82.31.356.5504
E-mail : korengine@korengine.com
homepage: www.korengine.com/www.dngv.com